

## Your Ruby Verifone

It's a tremendous tool for your Point of Sales, to provide rapid and efficient service to your clients. It's highly reliable and of superb quality. But . . .

If you don't connect it to a BackOffice PC running a good BackOffice Software System, like our RubyBOSS System, you will not know how your business is performing. The BackOffice Software captures all the sales data generated by the Ruby Register and with it provides you the tools to see your operations in real time.

See inside for some of the tools in the RubyBOSS System.



## RubyBOSS System

Easy to Learn ... Easy to Use

Copyright CPC Systems  
Contact:

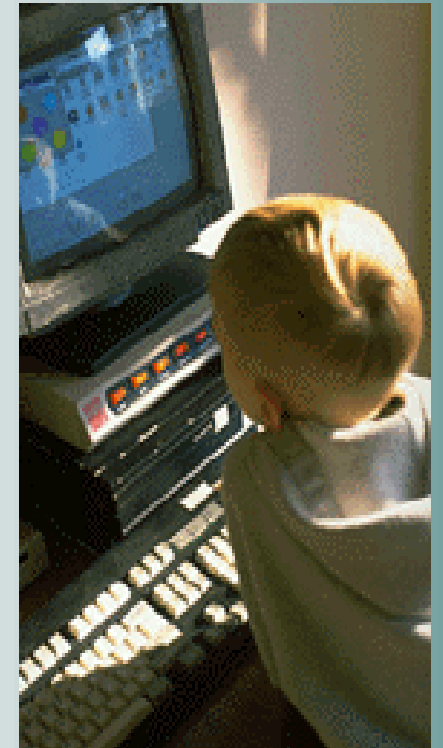
---

---

---



## RubyBOSS System



Easy to Learn ...  
Easy to Use

"Information Systems Since 1982"

## Take Control of your Business



YES ... Now I Can!

Controlling your operations' data is the most important element in order to have a prosperous and successful business. But, this is no easy task. All the data generated by your ongoing operations is so abundant that it's humanly impossible to manage it successfully without a computer system. This is more so in the case

of gas stations that also have to operate and control a Convenience Store.

The specialized functions in this type of business requires a systems specifically developed for it. Additionally, when the sales data is generated by a Ruby Register, there is the need to interface with the register and to be able to handle the multiple files that are available to process the data..

The RubyBOSS System fully meets these requirements assuring you that you will always have timely and precise information of your operations. You will have full sales details of each shift as soon as it's closed and the inventory will be automatically updated. You will be able to review sales by department or detailed by product, including profit margins, inventory on hand and transactions history.

See the following summary of some of the basic functions available in the RubyBOSS System.

### Inventory Control

All the maintenance to the inventory price book, like entering new items, price updates, department changes, etc., are made in very simple routines from the back office PC and are, automatically, transferred to the Ruby Register without interfering with the Cashier's sales functions. Additionally, you will have other valuable data for each product, such as, on hand quantity, item cost, bin location, profit margin, vendors, min/max levels, reorder level/qty, history, record number, etc. You will be able to lookup any item by UPC, record number or description and, most important, track shrinkage.

Sales are downloaded automatically at the end of each shift and the quantity sold for each product is reduced from inventory on hand. All shift data is saved for subsequent viewing and/or printing and for resolving the shift's short/over discrepancies.

You will have available sales/cost analysis reports for any date range. These may be summarized by department or detailed. You may select one department, various or all. All reports provide profit margins in percent and amount.

### Fuels

Easy entry of tank readings and fuel receipts in gallons and cost. Averages are calculated for the fuel load cost for precise profit margins. Produces detailed fuel sales reports by grade including daily averages. Daily variances reports by tank to detect fuel losses as required by EPA.



For whatever comes your way

### Client Accounts

View client account records instantly by entering the client's name or account number. The record includes name, address, phone number, last sales date and amount, last payment date and amount and history. Includes periodic and on demand Account Statements . Aging of account in 15, 30,, 60 and 90 days. Payment application may be by invoice or applied beginning with oldest.

### Vendor Accounts

View vendor account records instantly by entering the vendor's name or account number. The record includes name, address, phone number, last purchase date and amount, last payment date and amount and history. Includes projected payment disbursement calculations. Aging of account in 30,, 60 and 90 days. Payment application may be by invoice or applied beginning with oldest. Prints vendor payment checks with detailed payment distribution stub.

### Other Features

Passwords available for entry to all the system modules activated by administrator. Setup of cashier records with Id's and passwords from back office. Backup of all Ruby Register configuration files for easy recovery in case of register crash. Assignment of register keys to specific departments. Daily (24 hour) sales and fuel reports.



Copyright CPC Systems  
Contact:

---

---

---